



GAT MONTHLY MEMBERSHIP PROGRESS REPORT

Results as of: 6/30/2023

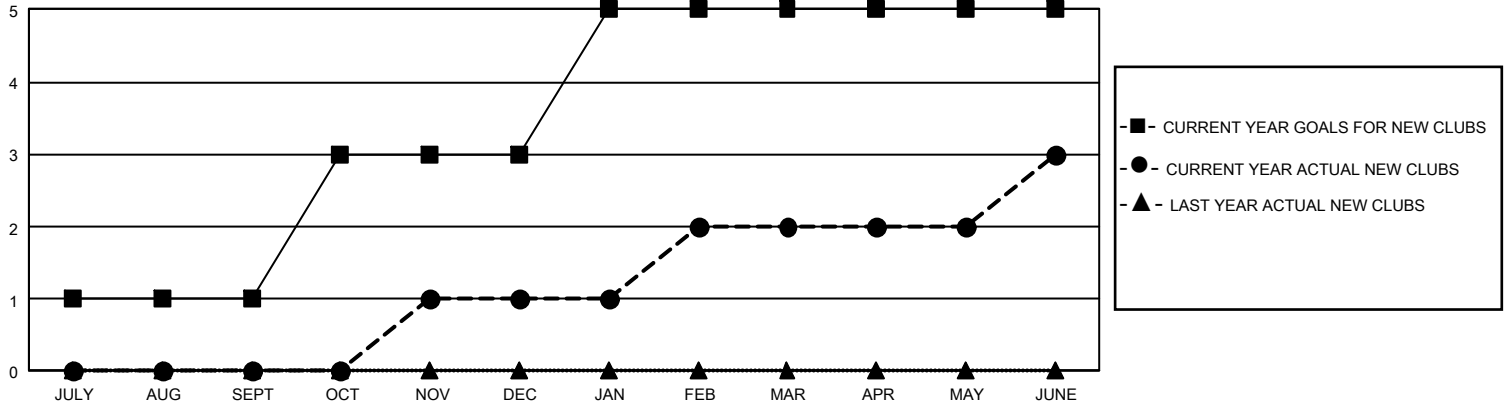
GMT Constitutional Area 2, Group C

REPORT DOES NOT INCLUDE CLUBS IN UNDISTRICTED AREAS.

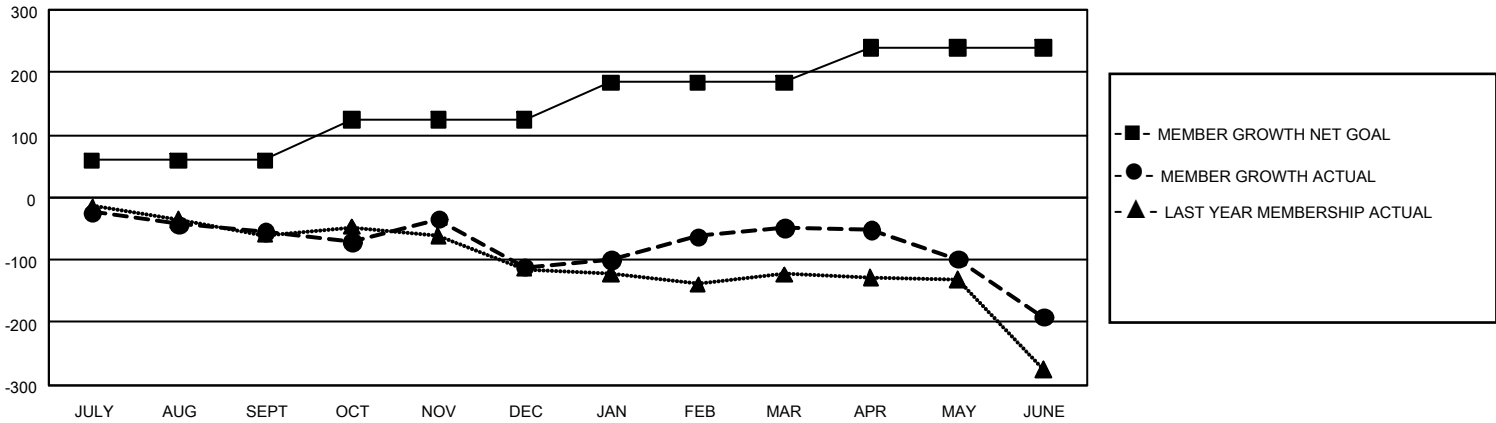
Clubs			
RESULTS FOR 2022-2023			
QUARTER	NEW CLUB GOAL	NEW CLUBS	DROPPED CLUBS
JULY/AUG/SEPT	3	0	0
OCT/NOV/DEC	6	1	3
JAN/FEB/MAR	6	1	1
APR/MAY/JUNE	0	1	6

Members			
RESULTS FOR 2022-2023			
QUARTER	MEMBER GROWTH NET GOAL	MEMBER GROWTH ACTUAL	DROPPED MEMBERS ACTUAL (including transfers)
JULY/AUG/SEPT	59	28	77
OCT/NOV/DEC	65	104	155
JAN/FEB/MAR	60	120	55
APR/MAY/JUNE	55	137	267

GOALS AND ACTUAL NEW CLUBS CUMULATIVE



GOALS AND ACTUAL MEMBERS CUMULATIVE



DROPPED CLUBS: 10	96 CLUBS OF 162 ADDED 1 OR MORE NEW MEMBERS	<u>GENDER DISTRIBUTION</u>	
		MALE 2,101 (64.67%)	FEMALE 1,148 (35.33%)
<u>DROPPED MEMBERS</u>		NON BINARY 0 (0.00%)	PREFER NOT TO ANSWER 0 (0.00%)
DECEASED 40	CLICK HERE FOR CUMULATIVE MEMBERSHIP DATA	TOTAL FAMILY UNIT MEMBERS 629	
CLUB CANCELLED 52		FAMILY MEMBERS PAYING HALF DUES 324	
OTHER 463			
TOTAL 555			